



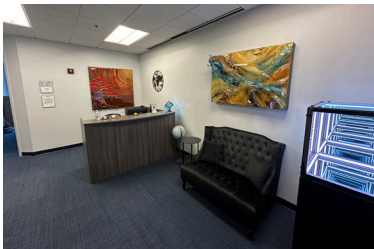
840N The Plaza

This premier corner suite is located in the heart of Downtown Orlando, with a fantastic view of Lake Eola. Includes 14 private office units, 2 conference rooms, reception desk, and common kitchen. Best suited for attorneys, architects, and other professionals who require ease of access to the Orlando's business scene.



Location

Located close to several important locations, including the Courthouse which is a quick 10 minute walk or 3 minute drive. The Orlando International and Executive airports are a 25-minute and 12-minute drive, respectively.



Building

The Plaza has become one of the most prominent business centers in Downtown Orlando's Core Business District.



Tenants

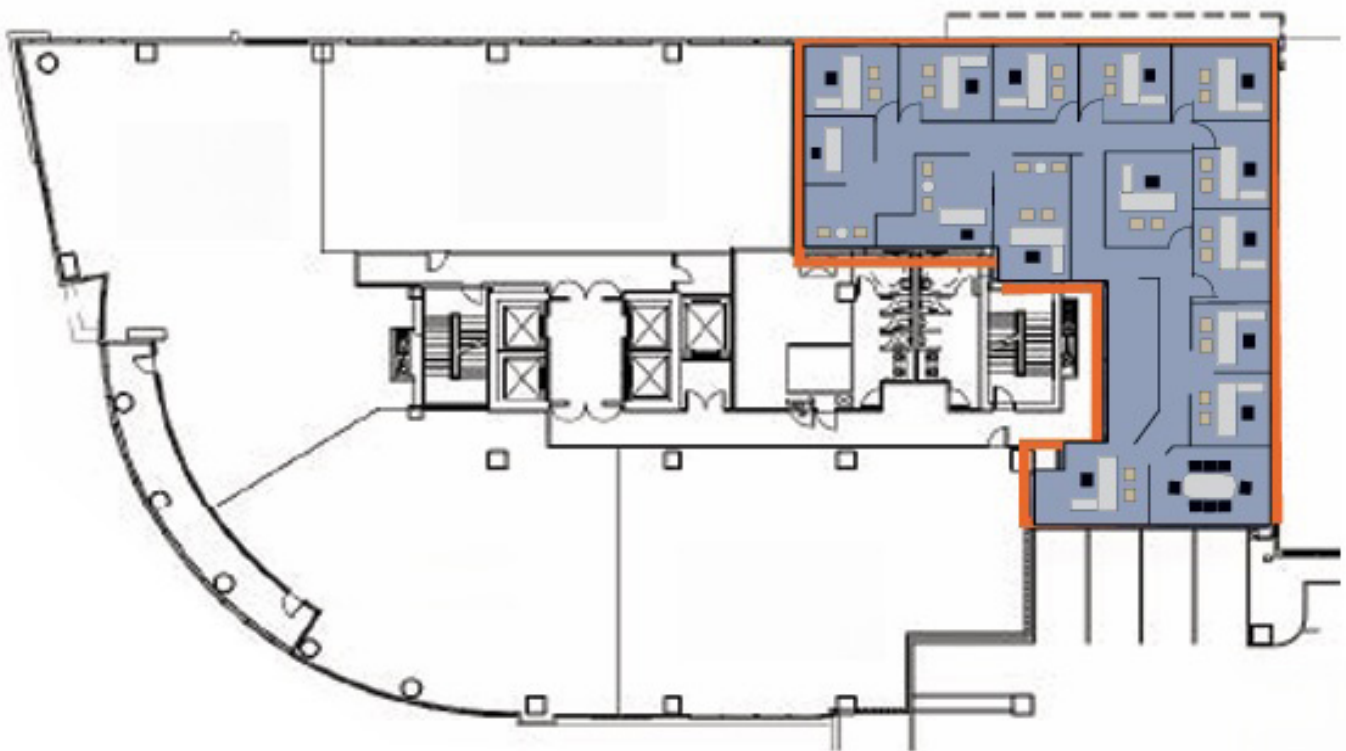
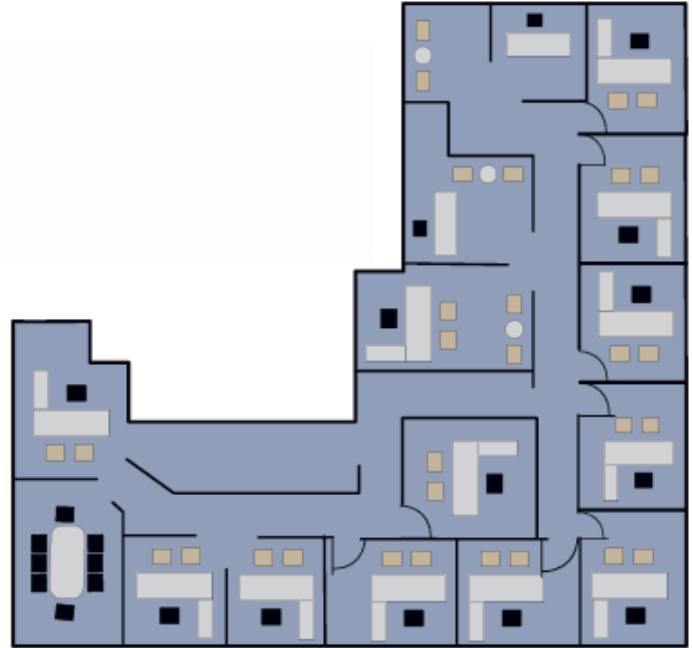
The office is currently occupied by several high-quality tenants with professions ranging from Law to Accounting.





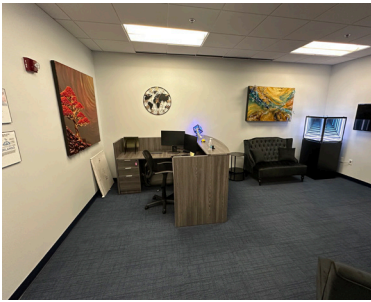
Unit Overview

- 4,818 Square Feet of Heated Area
- Prime Corner Suite
- Sweeping Views of Lake Eola
- 14 Private Offices
- 2 Conference Rooms
- Conference Room
- Reception Area/Kitchen
- Floor to Ceiling Glass
- Attorney Tenants
- Carpet floors





Property Information



Location

Street Address	121 S Orange Ave
City, State, Zip	Orlando, FL, 32801
County	Orange
Distance to MCO	24 Minutes (20 Miles)
Distance to ORL	12 Minutes (4 Miles)

Property Information

Property Type	Office
Property Subtype	Commercial
Office Size	4,818 SF
# Offices	14
Conference Rooms	2

